



3rd · 8th
June 2013

NATIONAL TRANSFER ACCOUNTS

Barcelona 2013

Faculty of Economics and Business, UB

www.ntaaccounts.org

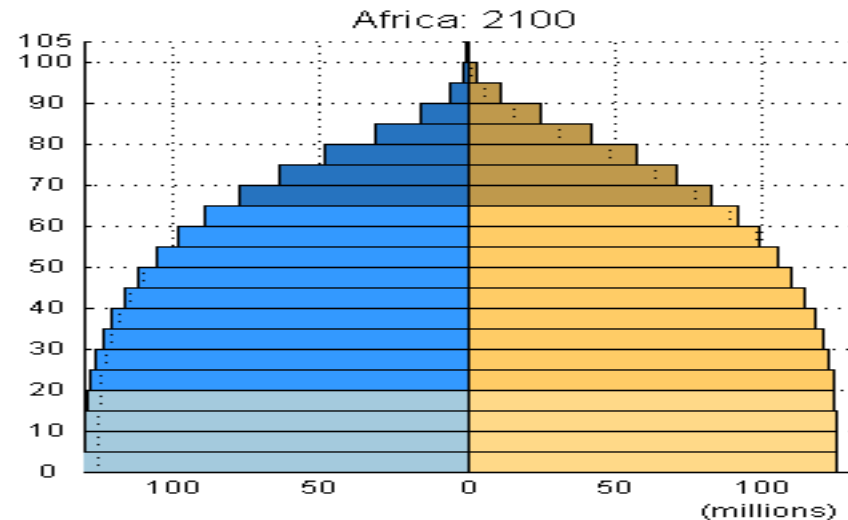
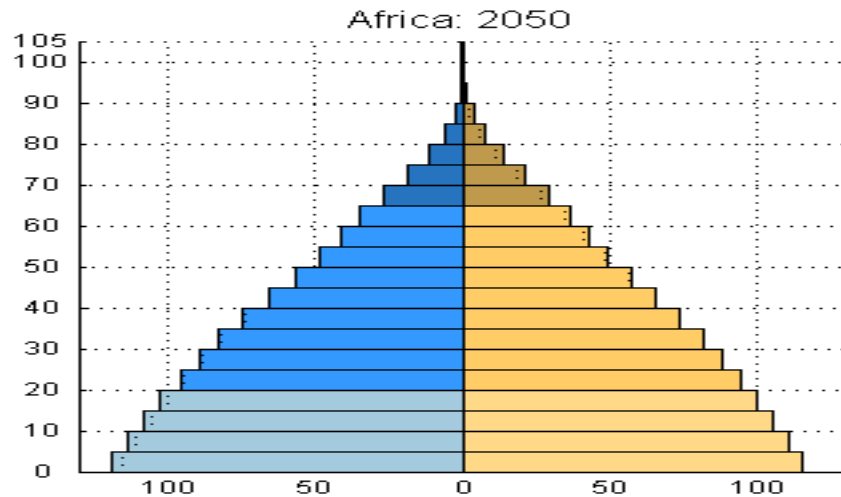
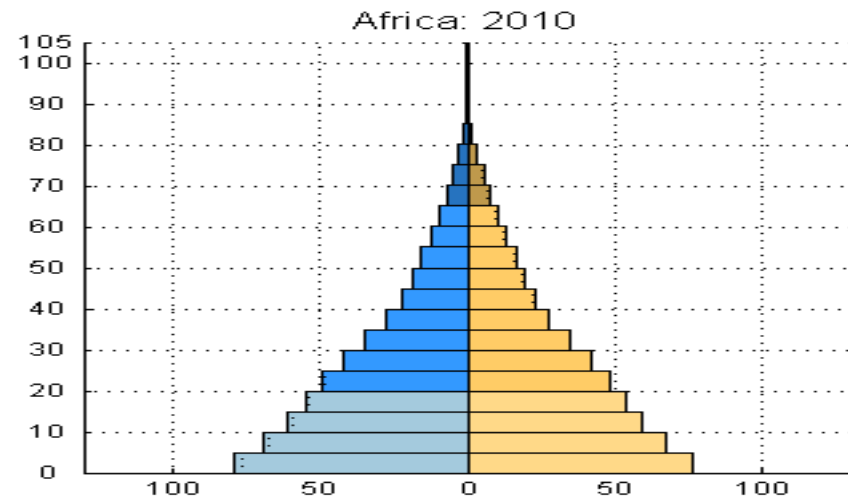
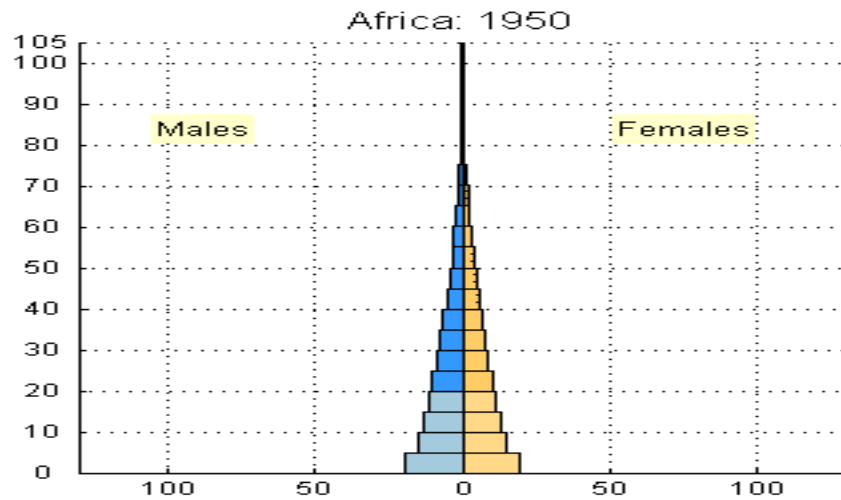
EMERGING EVIDENCE ON THE DEMOGRAPHIC DIVIDEND OF AFRICA

**Adedoyin Soyibo
University of Ibadan
Nigeria**

OUTLINE

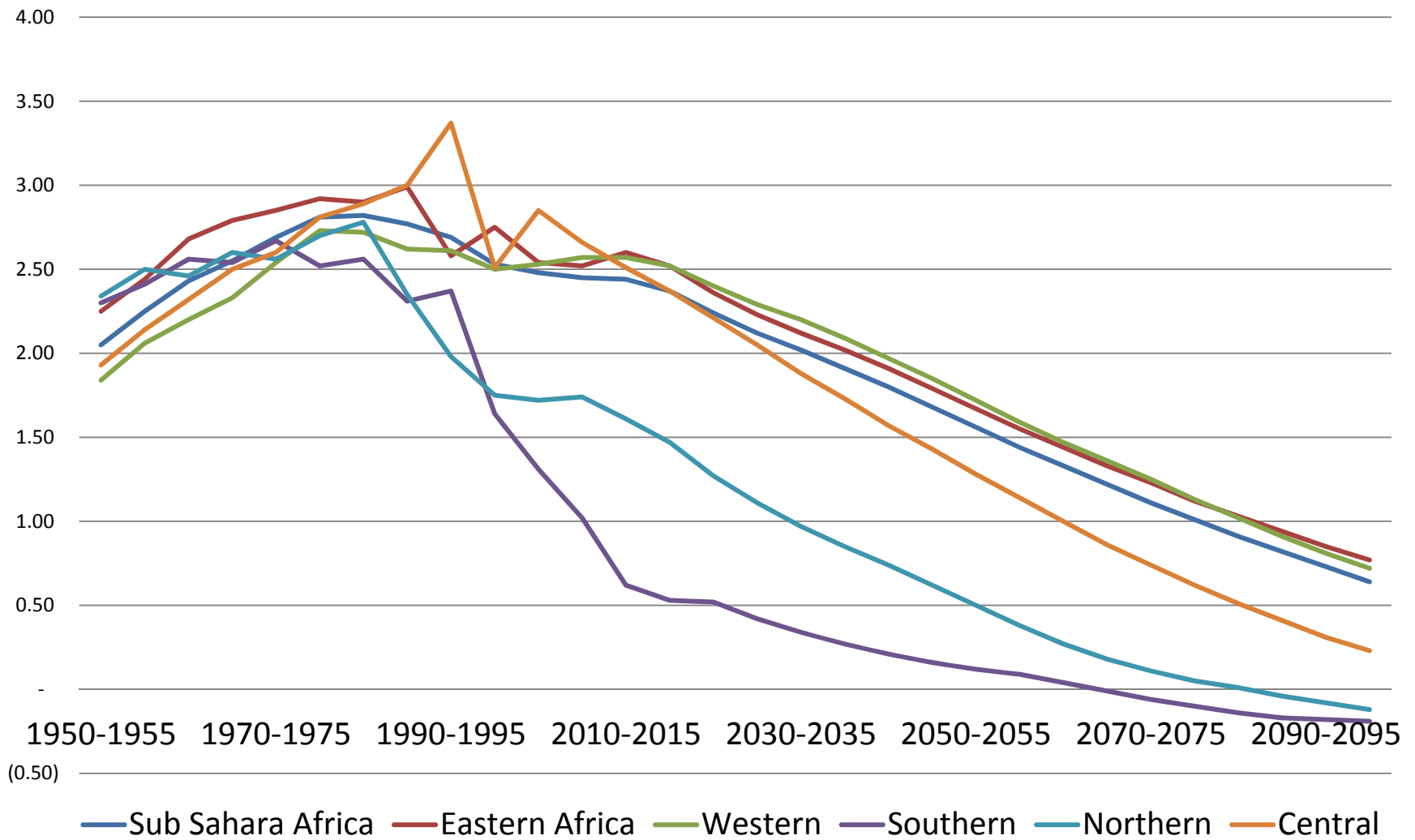
- Population Age Structure
- LCD Estimates and Components
- Demographic Dividend Estimates
- Implications
- Recommendations
- Acknowledgements

Africa's Population Structure, 1950-2100

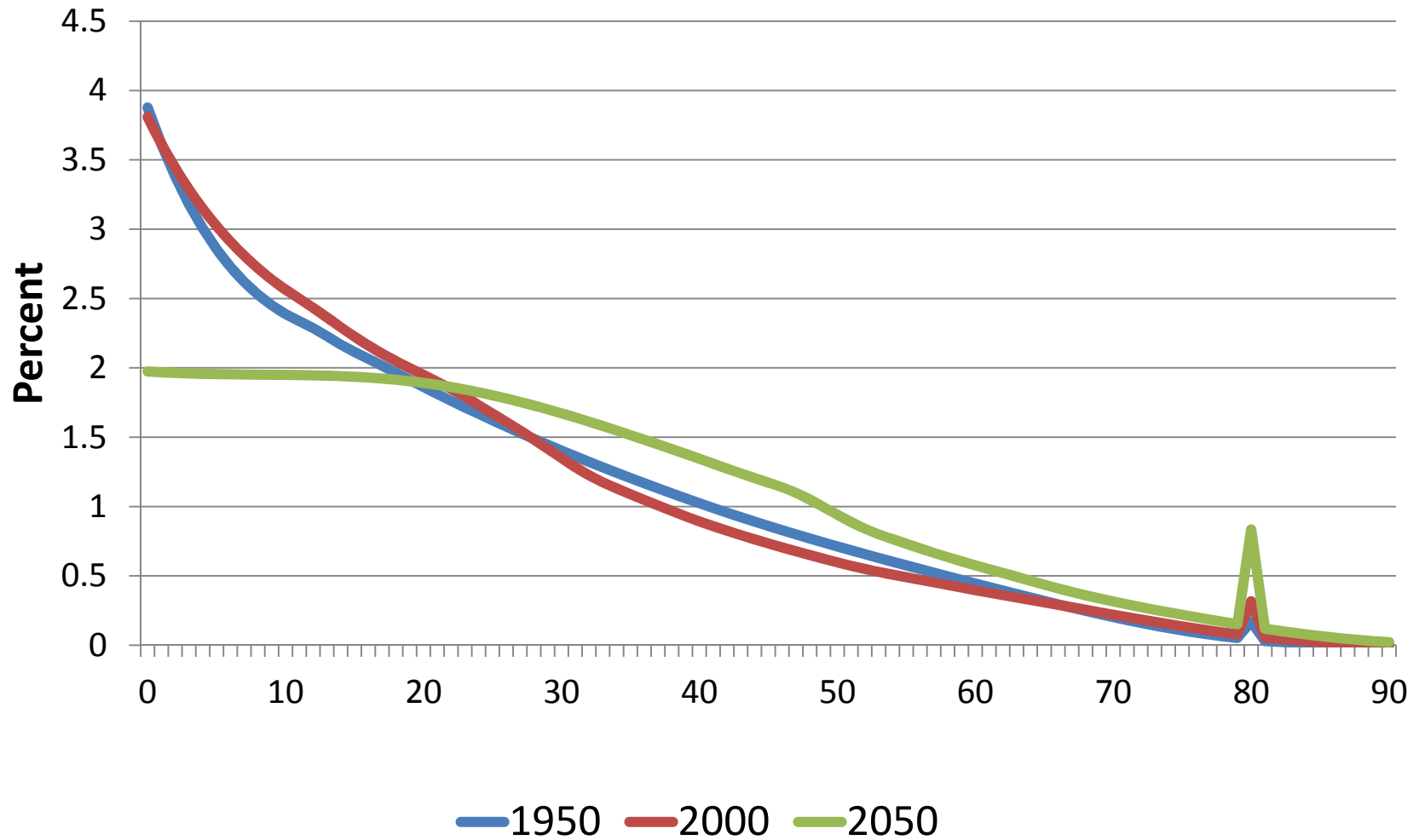


- ❑ In 1950 Africa was 183 million with dependency ratio of 82% ; Working Age Population (WAP) ratio of just 18%
- ❑ In 2010 Africa's population became to 863 million with WAP ratio about 1.5 times 1950 value.
- ❑ By 2050, Africa's population is projected to increase to 1,753 million.
- ❑ Over the three periods, population structure alters in favour of less Young Age Dependency; with greater Old Age Dependency observed with increasing years

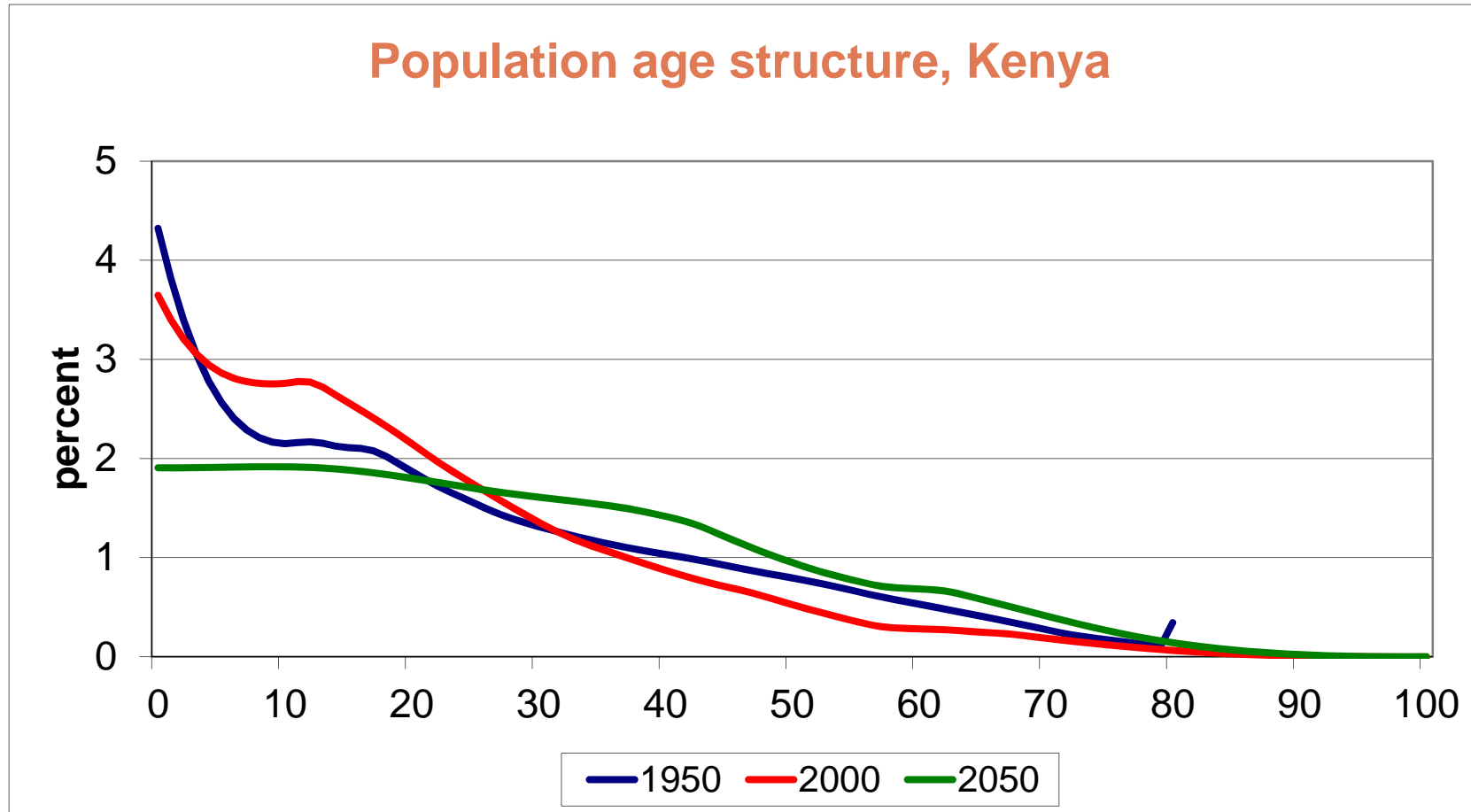
African population Growth by Regions, 1950-2100



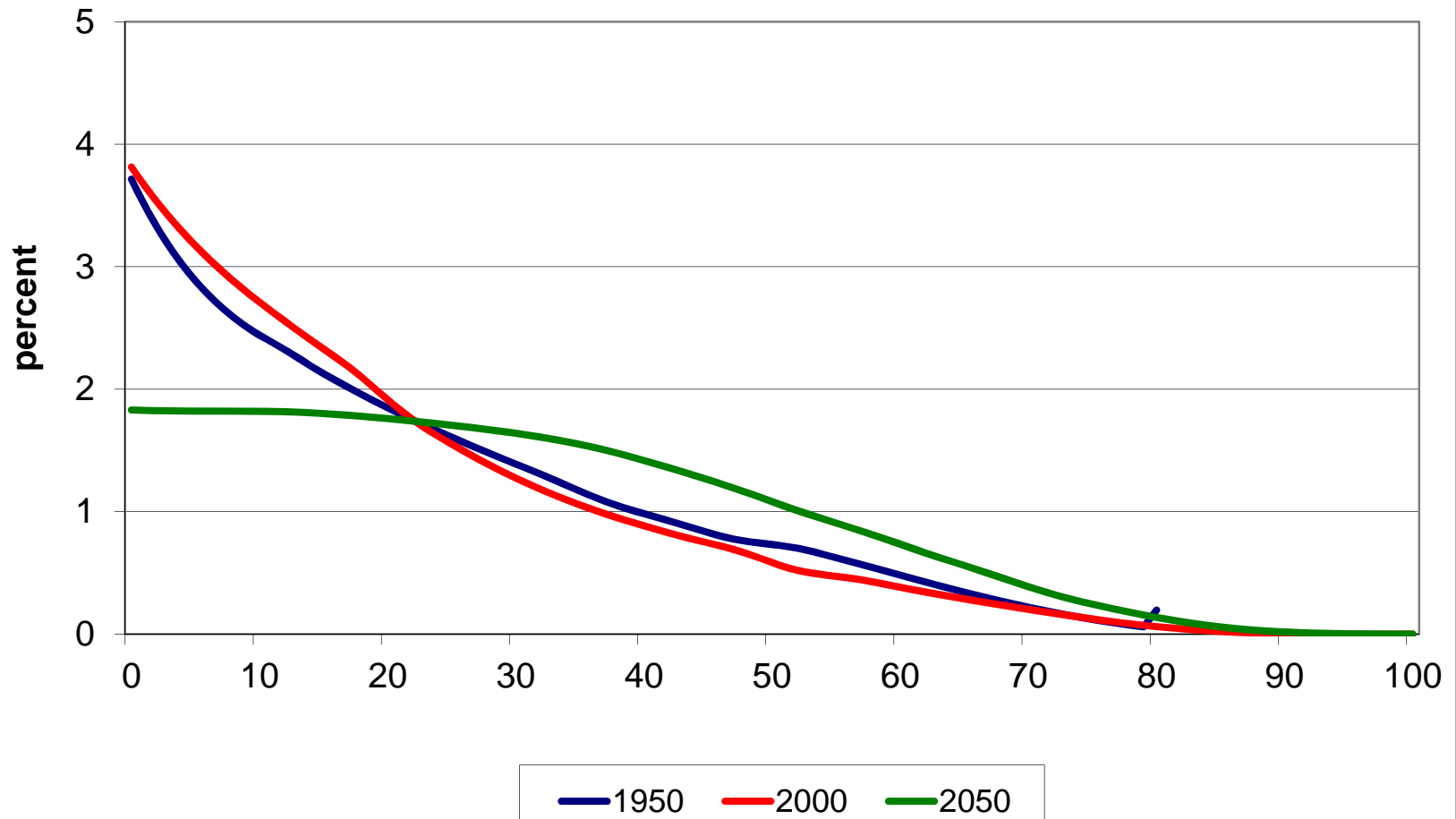
Population Age structure, Mozambique



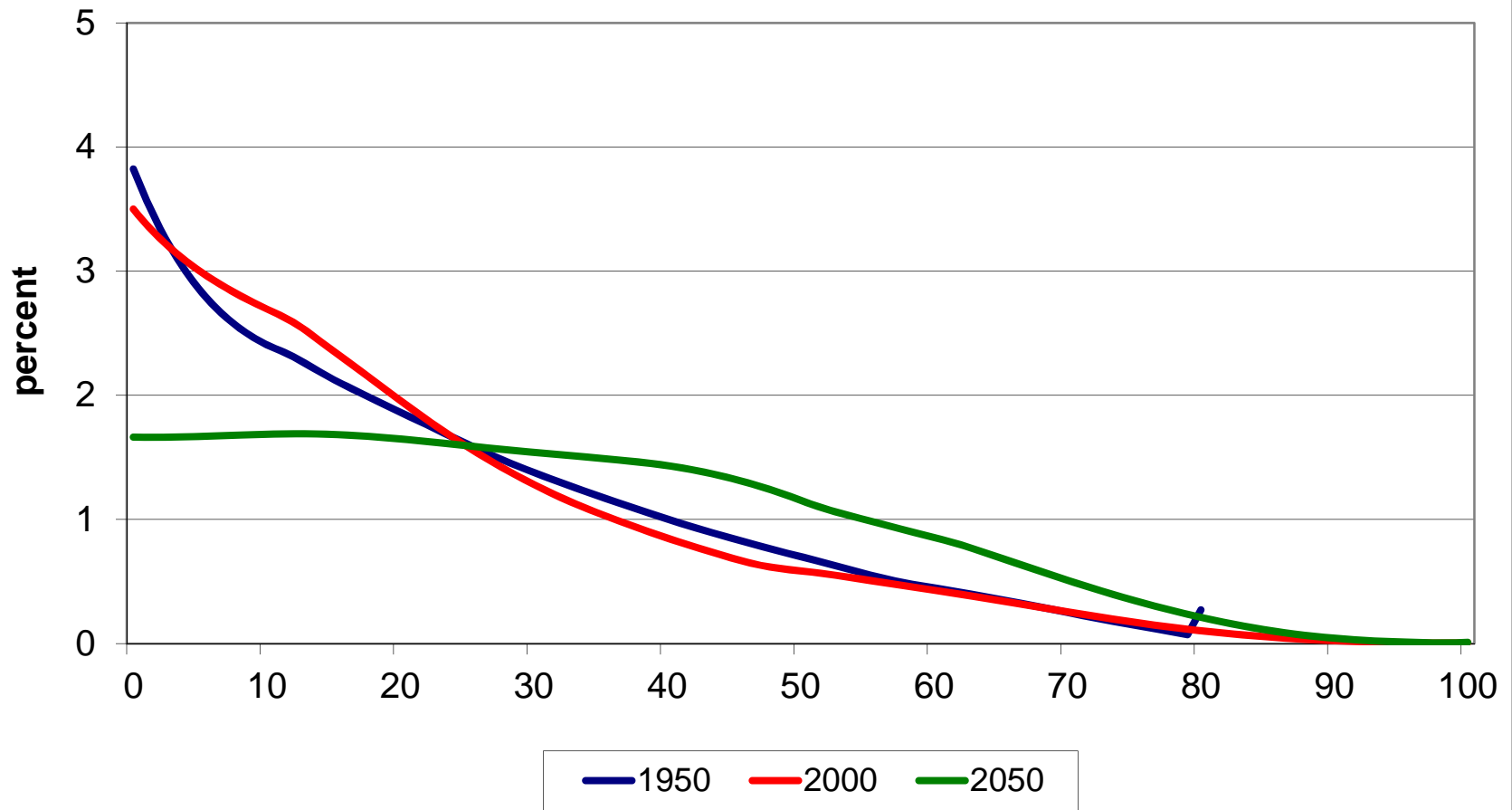
Population age structure, Kenya



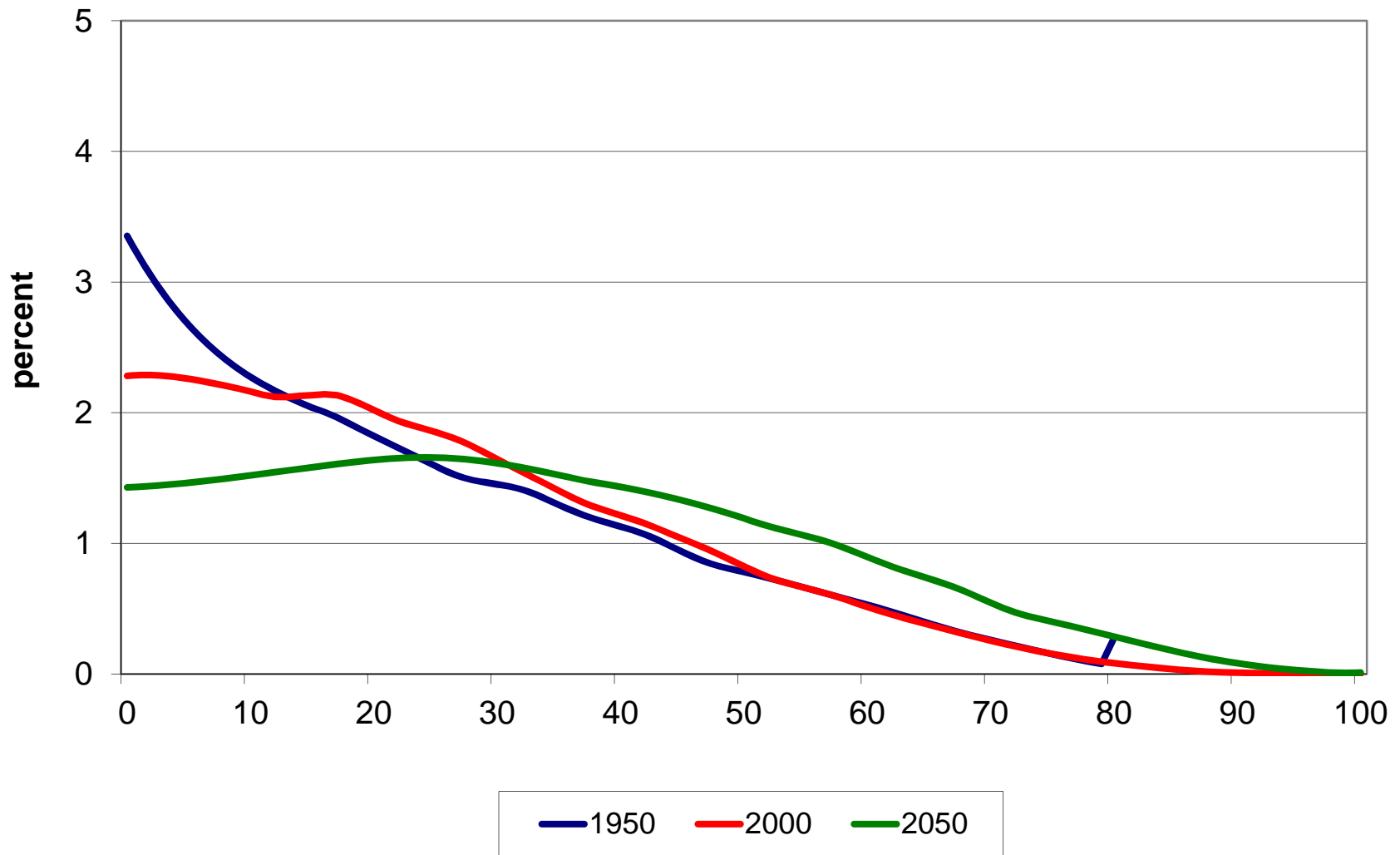
Population age structure, Nigeria



Population age structure, Senegal

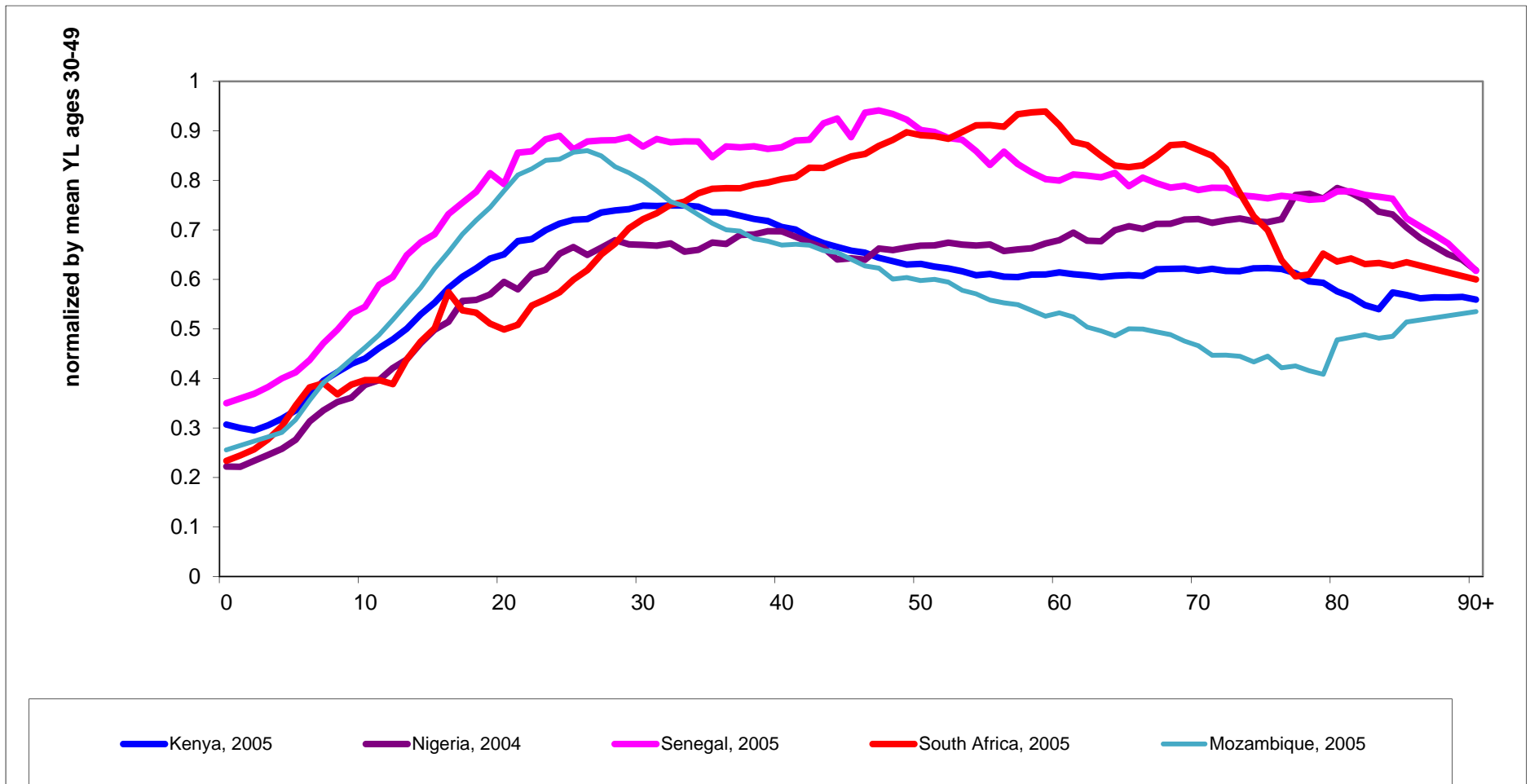


Population age structure, South Africa

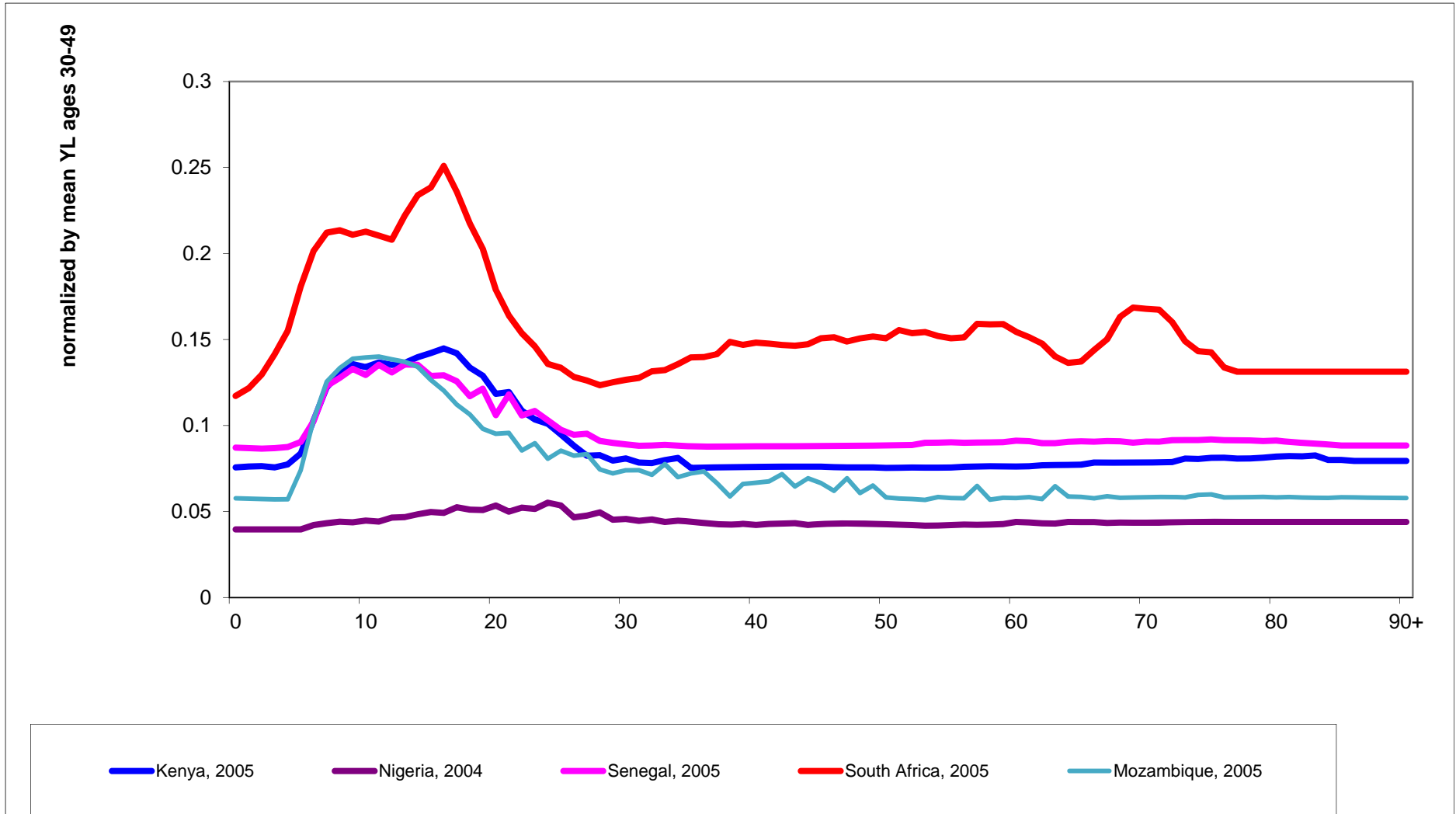


LCD Estimates and Components

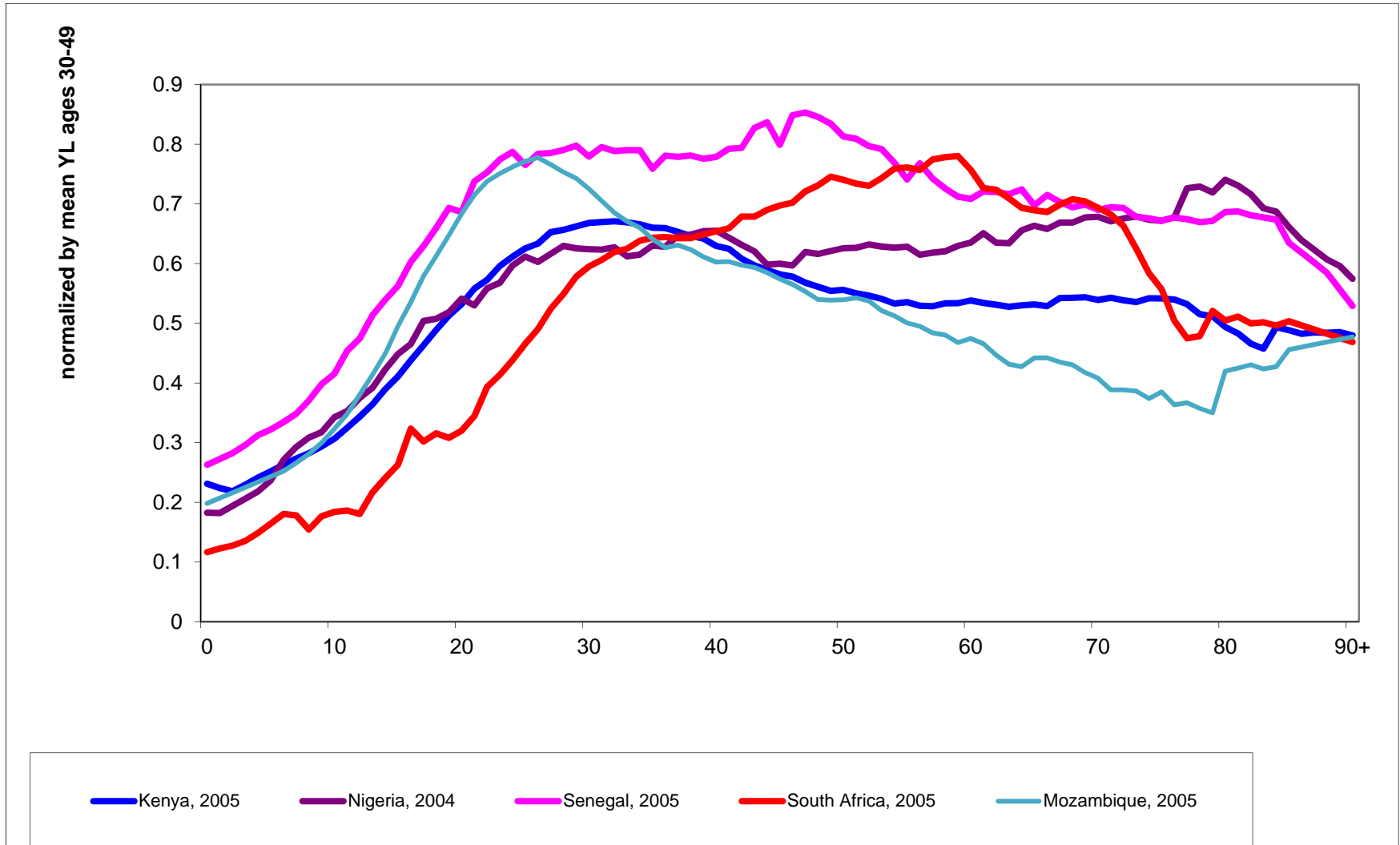
Per Capita Consumption



Per Capita Public Consumption

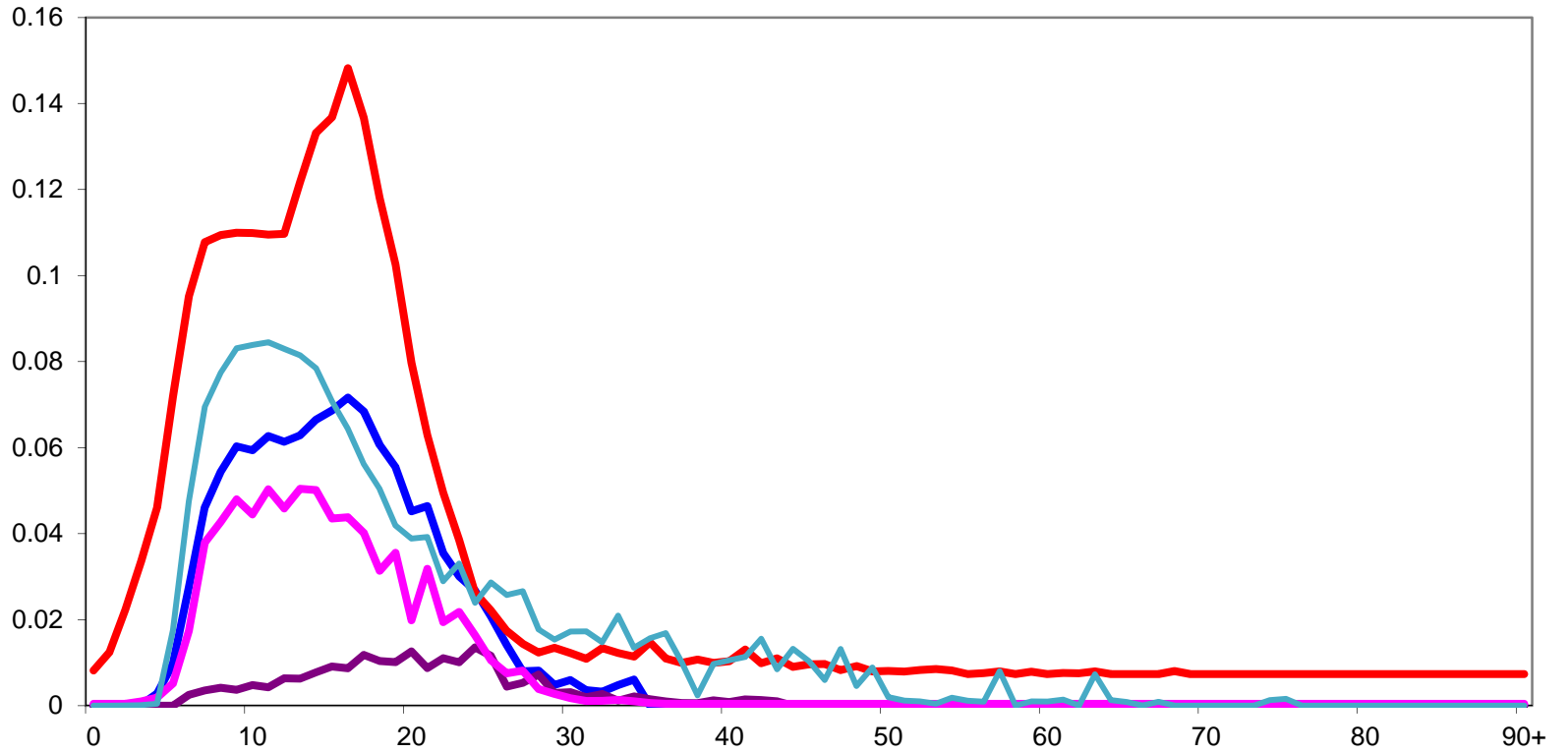


Per Capita Private Consumption



Per Capita Education Consumption

normalized by mean YL ages 30-49



Kenya, 2005

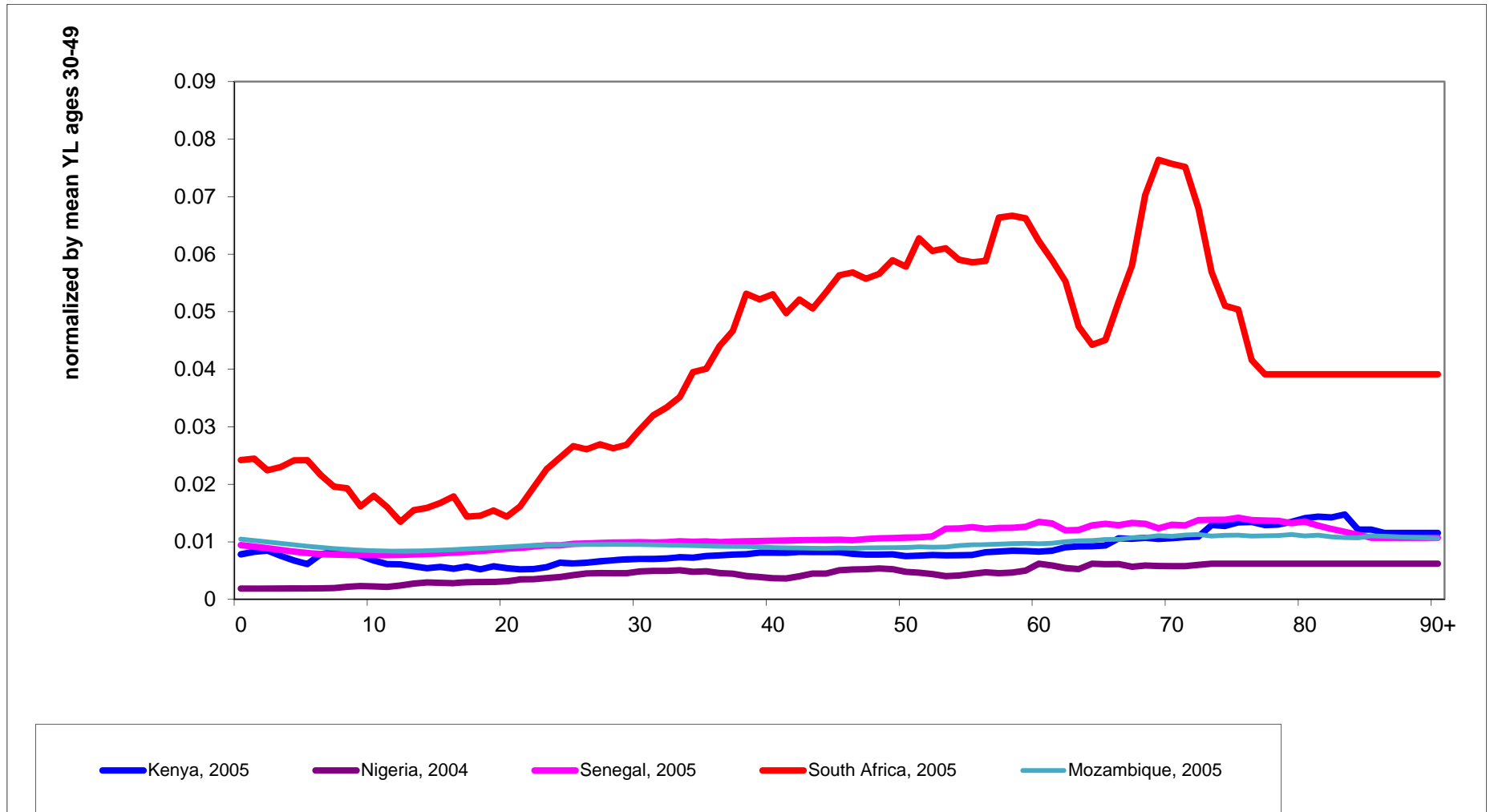
Nigeria, 2004

Senegal, 2005

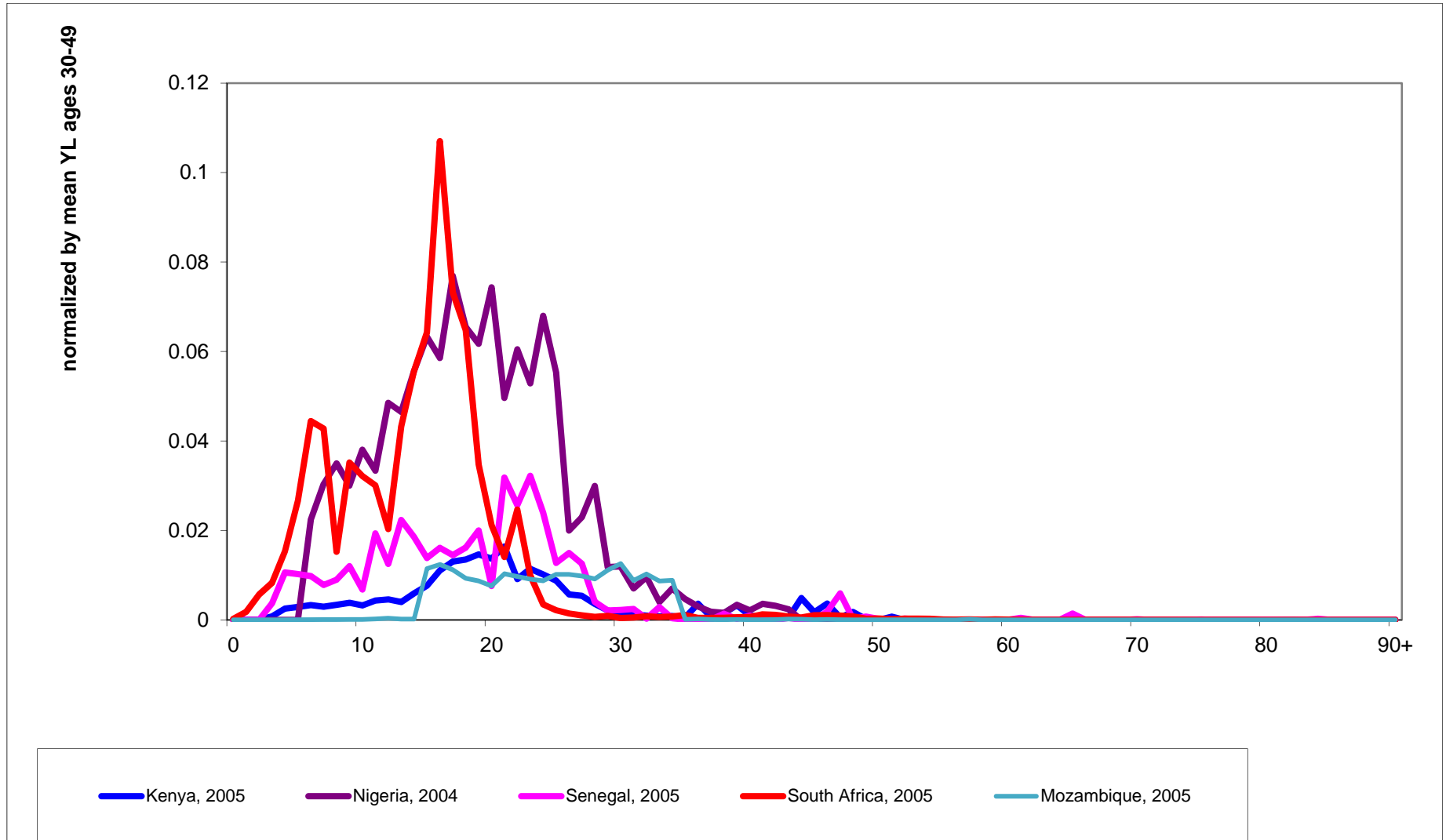
South Africa, 2005

Mozambique, 2005

Per Capita Health Consumption (Public)

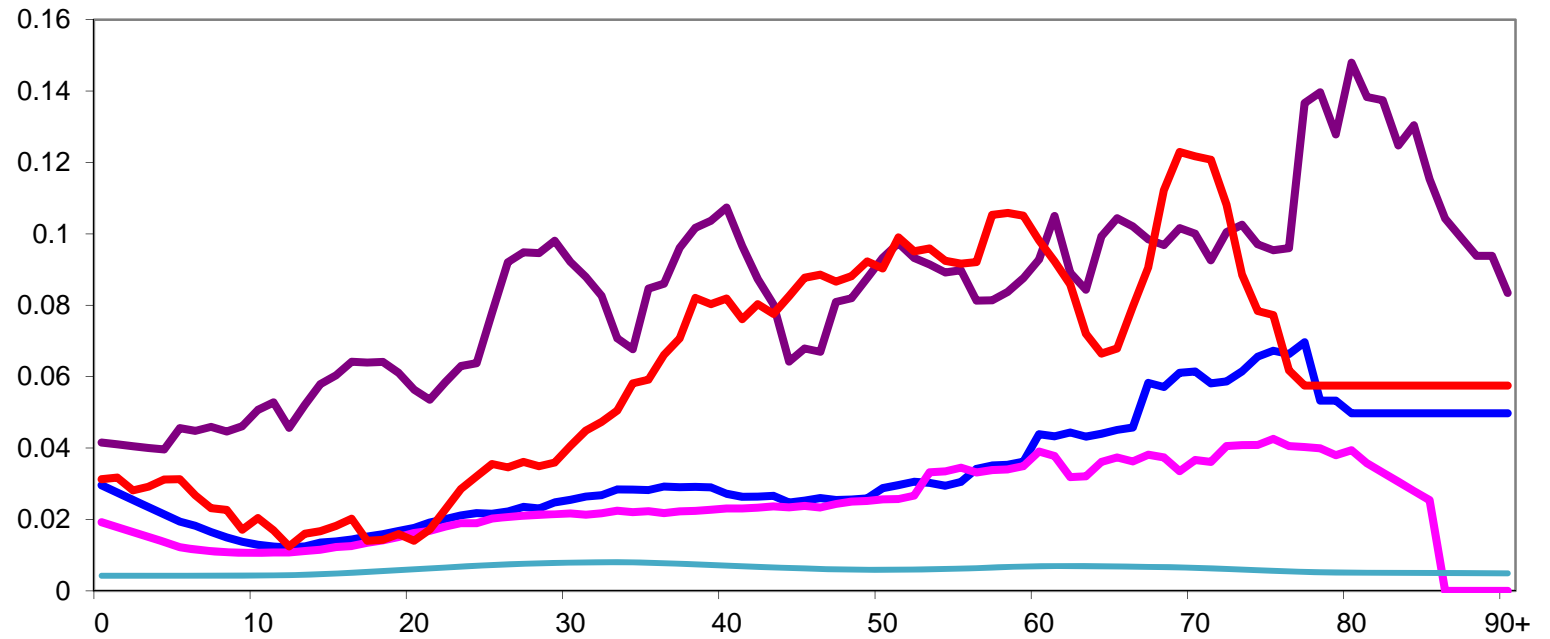


Per Capita Private Education Consumption



Per Capita Private Health Consumption

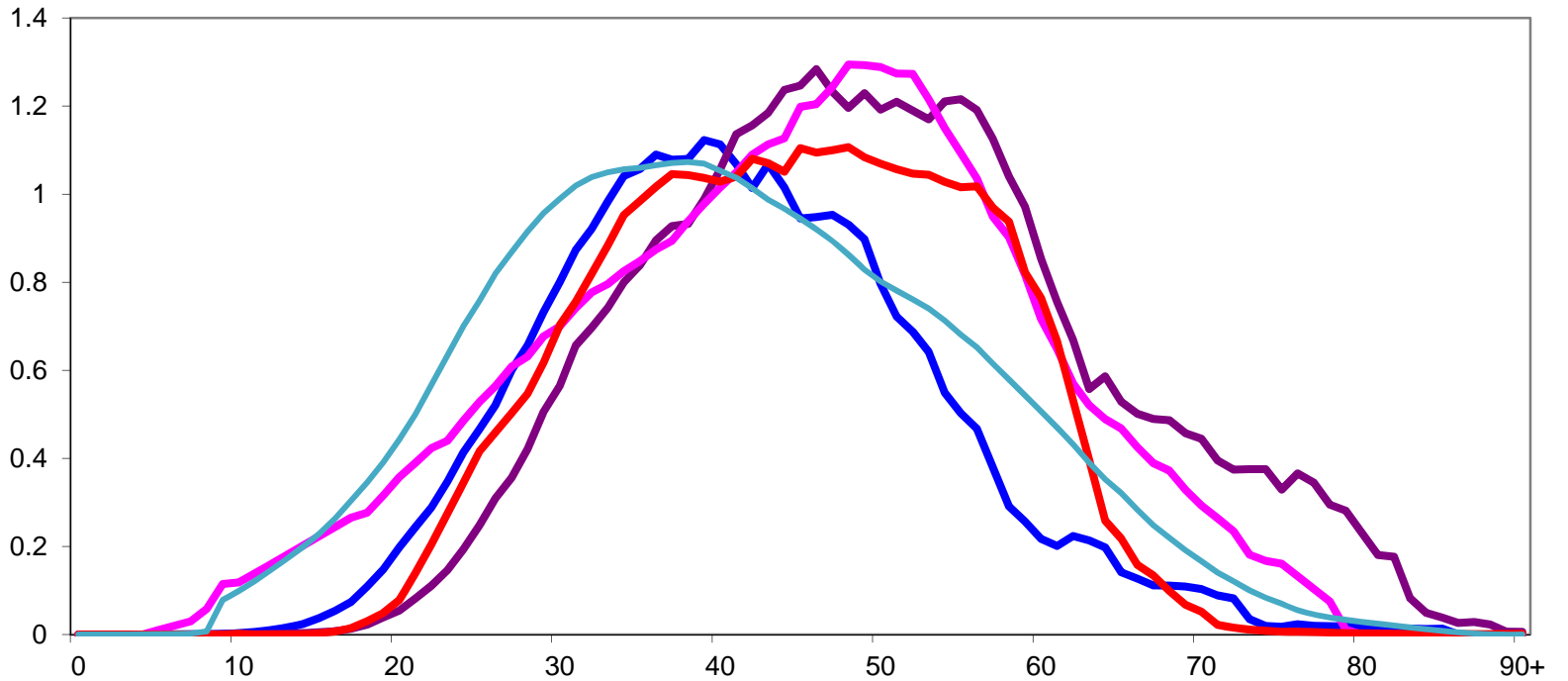
normalized by mean YL ages 30-49



— Kenya, 2005
 — Nigeria, 2004
 — Senegal, 2005
 — South Africa, 2005
 — Mozambique, 2005

Per Capita Labour Income

normalized by mean YL ages 30-49



Kenya, 2005

Nigeria, 2004

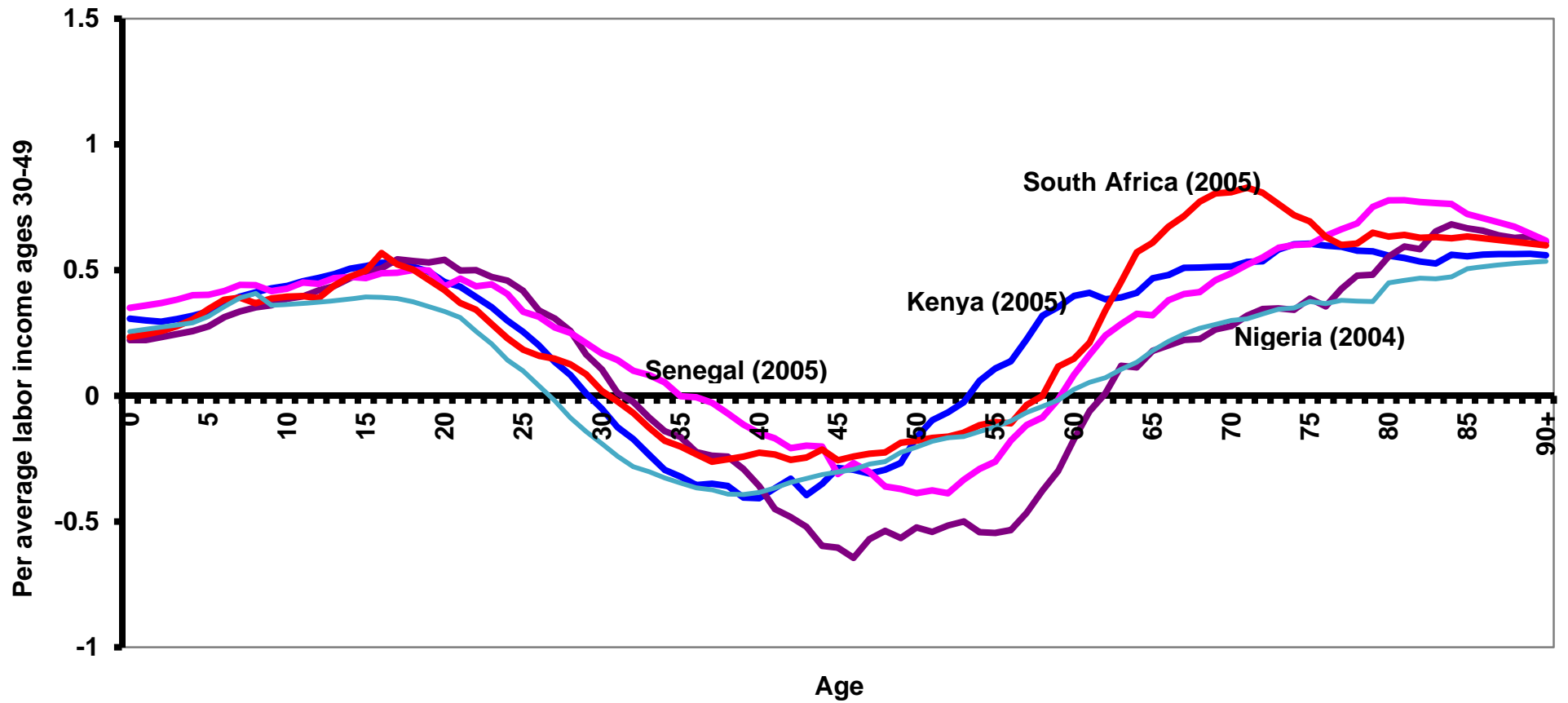
Senegal, 2005

South Africa, 2005

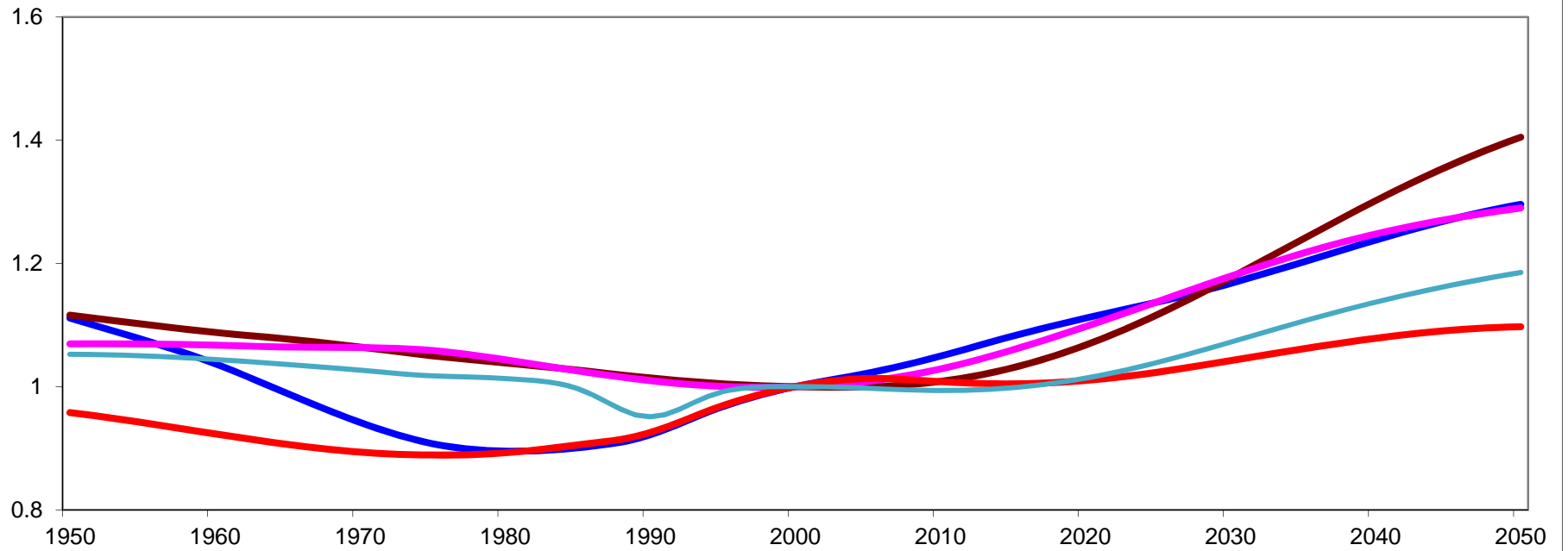
Mozambique, 2005

Per Capita Lifecycle Deficit

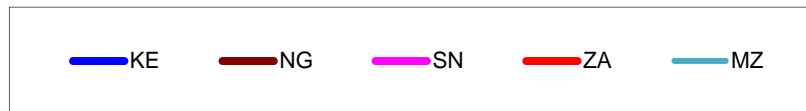
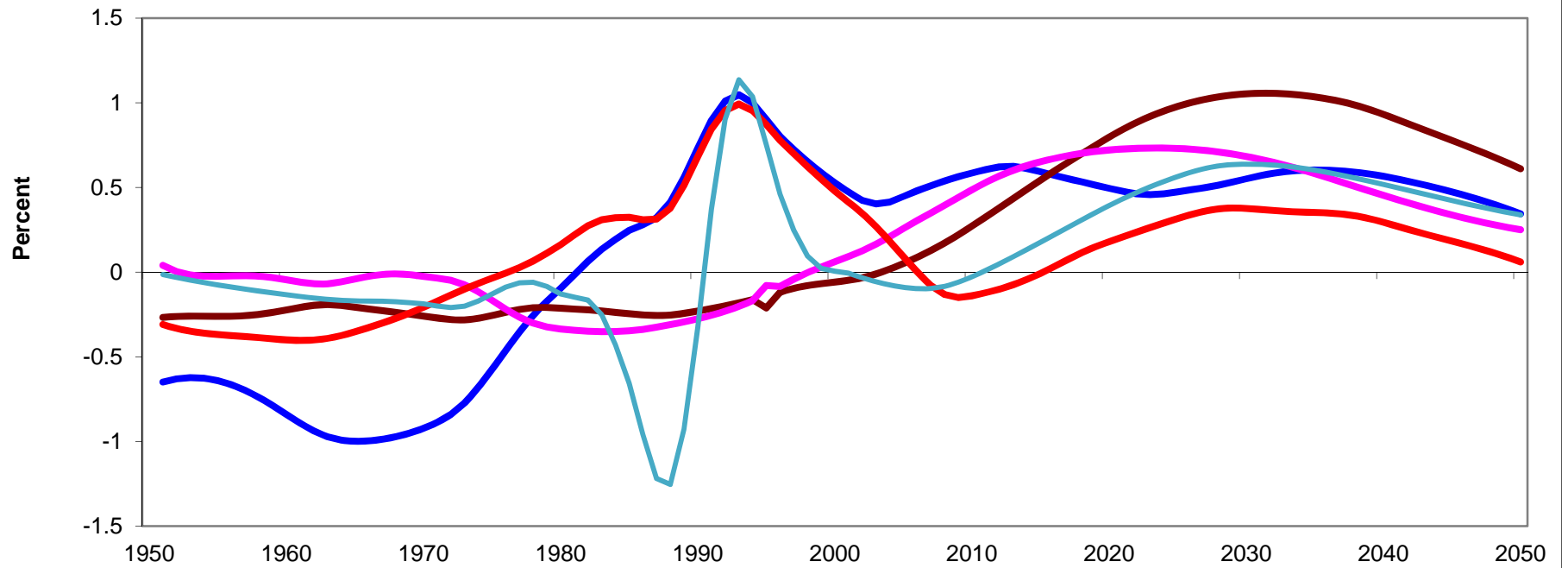
Lifecycle Deficit



Economic Support Ratio



The First Demographic Dividend



Currently, all countries are enjoying the demographic dividend (with small pause in South Africa)

However, the dividend is expected to reach the peak by 2030 and end soon after 2050

Implications

- In Africa, the best opportunities can turn out to be the biggest challenges
 - Jobs creation
 - Education
 - Health – infant/child mortality, maternal health, unmet need for family planning
- That, of course, raises the more difficult question of “How”. What are some of the main opportunities Africa can capitalize on to realize its demographic dividend?

Recommendations

- Improve access to labor markets for the youth domestically and regionally
- Working hard to promote fertility decline
- Strengthening and enhancing the financial sector to promote the conditions of promoting investments that will ensure the realization of the second DD

Acknowledgements

- Bill and Melinda Gates Foundation provided the grants for the research
- Global NTA Network, led by Ronal Lee and Andrew Mason
- The Country Africa NTA teams for the data and analysis

THANKS